

NEW

In vivo & In vitro Electroporator CUY21EDIT II

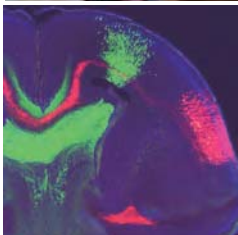


Made in JAPAN
日本製

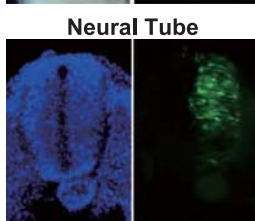
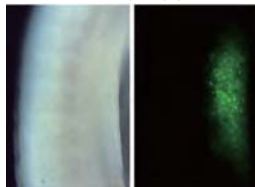
ALL in ONE

Single & Dual pulse modes
Square & Decaying pulses

In utero
(Mouse Embryo)
Cerebral Cortex



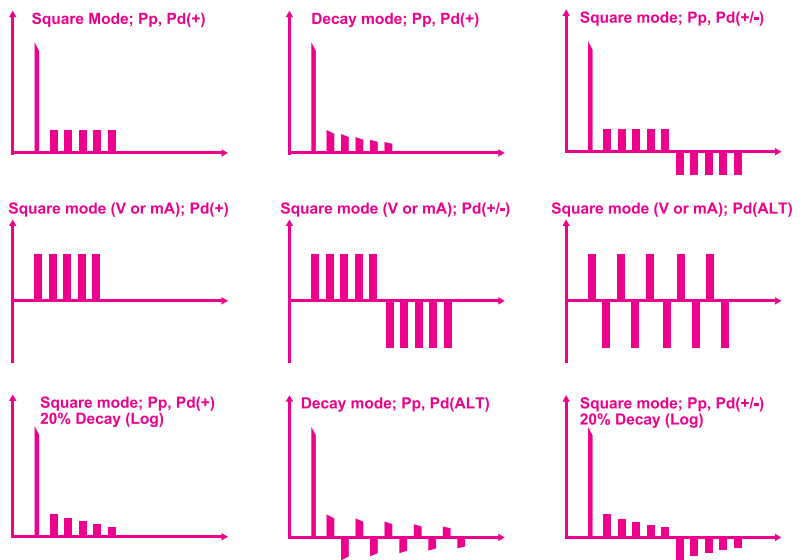
In ovo
(Chick Embryo)
Limb Bud



Neural Tube



In vitro



And More...

Constant CURRENT Pulses
Can set pulses emitting constant
Current (mA) as well as Voltage (V)

BEX

BEX Co., Ltd.

Email: info@bexnet.co.jp

URL: <http://www.bexnet.co.jp/english>

3 Specification

Poration pulse [Pp]

Waveform	Decaying Square
Voltage	1 - 400V in 1V resolution
Pulse length [Pon]	0.01 - 99.9m Resolution: - 0.01ms between 0.01 – 9.99ms - 0.1 m between 10.0 - 99.9ms
Pulse interval* [Poff]	0.05 - 99.9ms Resolution: - 0.01ms between 0.01 – 9.99ms - 0.1 m between 10.0 - 99.9ms
No of pulses	1

*Interval between poration and driving pulse

Driving pulse [Pd]

Decay (V) mode (Decay pulse)

Voltage	1-350V in 1V resolution
Maximum current	10A
Pulse length [Pon]	00.5 – 1000ms Resolution: - 0.01ms between 0.05 - 9.99ms - 0.1ms between 10.0 - 99.9ms - 1ms between 100 - 1000ms
Pulse interval [Poff]	00.5 – 1000ms Resolution: - 0.01ms between 0.05 - 9.99ms - 0.1ms between 10.0 - 99.9ms - 1ms between 100 - 1000ms
Condenser capacity	Choice from 3.3uF, 10uF, 33F, 100uF, 330uF or 940uF (Multiple choices are available. Min: 3.3uF; Max: 1416.3uF)
No of pulses	1-1000 number(s); On-Off switchable

Square (V) mode (Constant-voltage square pulse)

Voltage	1-250V in 1V resolution
Maximum current	1A (1000mA)
Pulse length [Pon]	00.5 – 1000ms Resolution: - 0.01ms between 0.05 - 9.99ms - 0.1ms between 10.0 - 99.9ms - 1ms between 100 - 1000ms
Pulse interval ^{*2} [Poff]	00.5 – 1000ms Resolution: - 0.01ms between 0.05 - 9.99ms - 0.1ms between 10.0 - 99.9ms - 1ms between 100 - 1000ms
Decay rate	0 - 99% in 1% resolution; Choice from Linear mode or Log mode
No of pulses	1-1000 number(s); On-Off switchable

Square (mA) mode (Constant-current square pulse)

Current	1 - 1000mA in 1mA resolution
Maximum voltage	200V
Pulse length [Pon]	00.5 – 1000ms Resolution: - 0.01ms between 0.05 - 9.99ms - 0.1ms between 10.0 - 99.9ms - 1ms between 100 - 1000ms
Pulse interval ^{*3} [Poff]	00.5 – 1000ms Resolution: - 0.01ms between 0.05 - 9.99ms - 0.1ms between 10.0 - 99.9ms - 1ms between 100 - 1000ms
Decay rate	0 - 99% in 1% resolution; Choice from Linear mode or Log mode
No of pulses	1-1000 number(s); On-Off switchable

^{*2} In case decay rate is not 0%, the minimum time is 0.1ms.

Miscellaneous

Impedance measurement	0 - 39KΩ Resolution: - 0.001KΩ between 0- 1KΩ - 0.01KΩ between 1 - 10KΩ - 0.1KΩ between 20 - 39KΩ
Voltage measurement	-512 - +512V in 1V resolution
Current measurement	-10.23A - +10.24A in 0.01A resolution (Pd is decaying) -1023mA - +10.24mA in 1mA resolution (Pd is square)
Memory	4GB (Over 20000 programs are recordable)
History record	The last 100 programs are saved. These program are exported to a PC by USB device. CSV format file(.csv) is output.

Other

Power	100 - 115 or 220V 50/60Hz
Fuse	10A (6.3 mm X 20 mm)
Dimensions	W240mm x L400mm x H203mm
Weight	9 Kg